

S1 Lantern Installation Guide

Ring Beam

We try wherever possible to deliver the ring beam pre-assembled. In the event it is not assembled, please refer to the instructions printed on the inside of the ancillaries box sleeve.



Step 1

Apply suitable sealant to the perimeter of the kerb upstand.

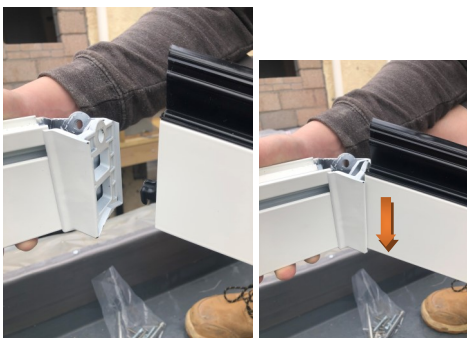
Step 2

Place the ring beam on the kerb. Ensure it is square and centralise.



Step 3

Secure the ring beam through the pre-drilled holes using the 70mm pan head screws supplied.



Step 4—Hip Assembly

Position the Hip bar into the crown moulding and slide down to locate.



Step 5—Hip Assembly cont.

Secure the Hip to the moulding using 13mm Hex bolt and washer. Repeat for all hips.



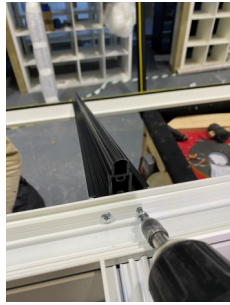
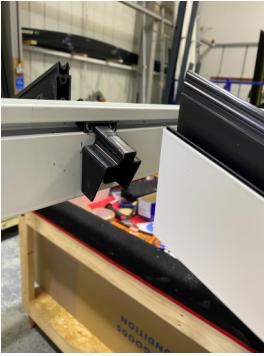
Step 6—Rafter and Hip Attachment

Place the frame (spider) into the ring beam, position and fix with 13mm pan head screws - as illustration.

The screw position is important!

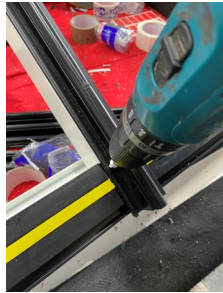
N.B The screws need to be positioned above the yellow tape, as pictured.

S1 Lantern Installation Guide



Step 7—Common Rafter Assembly

Slide rafter on to locating bracket and secure through predrilled holes in ridge with 4.8mm x 50mm self drilling screws.



Step 8—Jack Rafter Assembly

Position jack rafter into location on the eaves beam, drop jack rafter bracket into hip channel, push tight and fix with 4.8mm x 50mm self drilling screws. Secure all rafters ends to eaves with 13mm self drilling pan head screws.



Step 9—Ridge Body Assembly

Position the ridge body with location dots at same end. Attach with 80mm self drilling pan head screws.



Step 10—Glazing

Remove yellow security tape film in preparation for glazing.

Step 11—Glazing

Position the glass end closure centrally to the sealed unit making sure there is an equal gap each end.



S1 Lantern Installation Guide



Step 12—Glazing

All glass units must be pushed up tight to the ridge before locating onto the ring beam or the end closure won't locate. Press the glass down onto the security tape and ensure the end closure locates into the ring beam pocket.



Step 13—Glazing Top Caps

Ensure top caps are flush with the bottom of the bar and tap down firmly with a rubber/nylon mallet.



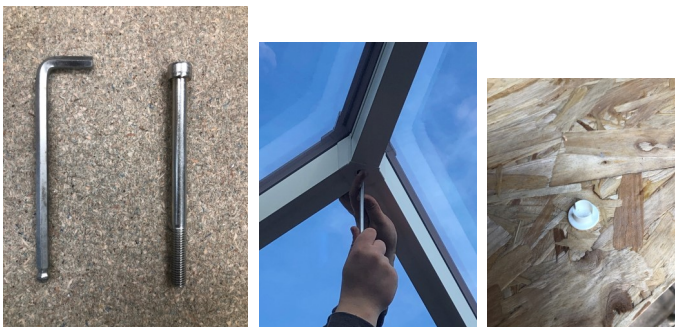
Step 14—End Caps

Fit the end caps with security screws provided - two screws per cap. (TR20 security bit supplied).



Step 15—Ridge Top Cap

Fit the top cap seal into the top cap and position on top of the frame (spider).



Step 16— Ridge Top Cap

Secure the top cap in place using 6mm Allen bolt from the underside. Insert the plastic cover over the Allen bolt.